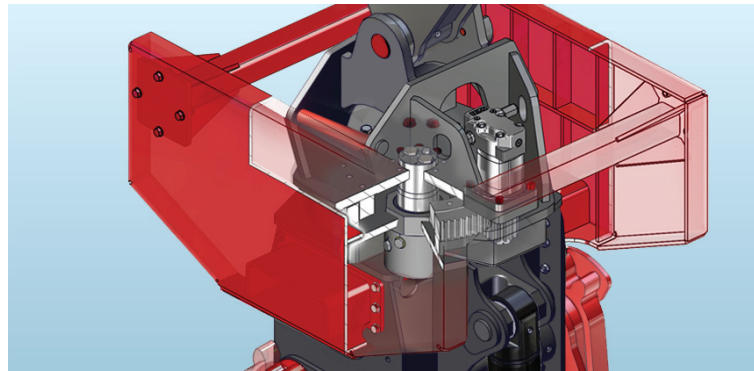
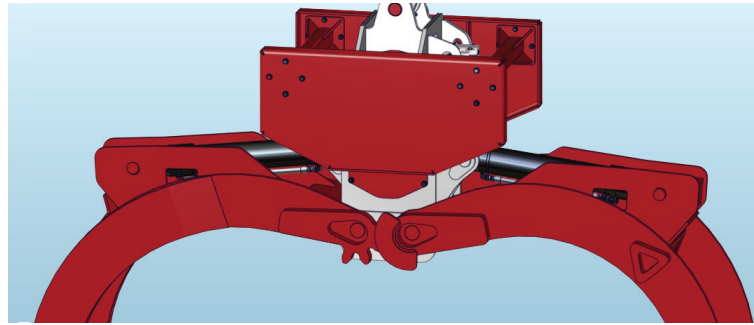
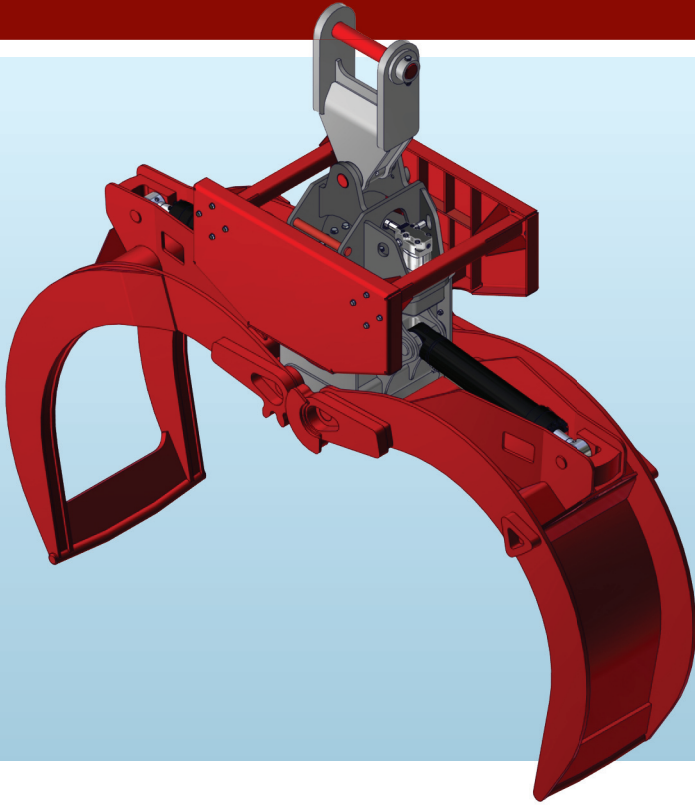


CTL DANGLE-HEAD GRAPPLE (BY-PASS)



WBM's CTL Dangle-Head Grapples are primarily used in loading and unloading cut-to-length wood in the bush or mill yard.

FEATURES AND BENEFITS

- High strength alloy steel used throughout for maximum durability and service life
- Proven jaw profile maximizes capacity, increases productivity, reduces loading cycles and allows for easier penetration of log piles
- HD pivot frame provides exceptional strength for reduced maintenance & repair expense
- Large bottom opening provides easy access for maintenance of components
- Fully supported Swivel core with a one-piece rotary seal for optimum durability
- One piece horseshoe jaw cylinder anchor for maximum strength

STANDARD EQUIPMENT

- Heavy duty bearing and gear drive system with continuous 360° rotation
- Motor equipped with cross over relief valves for protection against externally applied loads
- Heavy duty by-pass jaws with dual hinge pins and timing gears
- Cylinder complete with cushions in the open and closed position

OPTIONAL EQUIPMENT

- Available in various jaw configurations and sizes to suit machine and application
- Heavy duty butt plate to protect hydraulic motor, hose and cylinder
- Hanger link/ knuckle
- Bolt-on cutting edges

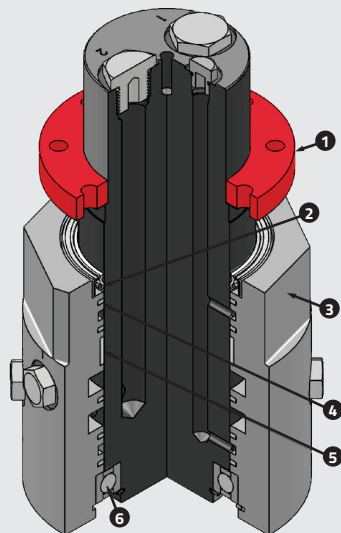
OTHER WBM FORESTRY PRODUCTS

- Complete logging fronts
- Machine guarding/ forestry conversions

Continued on next page »

LONG NECK HYDRAULIC SWIVEL

Swivel is sealed at top frame to prevent foreign material from entering into bearing cavity



1. Swivel suspended from upper grapple frame
2. Canned wiper to prevent contaminants entering into the swivel
3. Anti-rotational hex machined into the swivel housing
4. One piece rotary seal
5. Wear ring
6. Support bearing

EATON DUAL CROSS OVER RELIEF VALVE

Protects motor against externally applied loads

OPTIONAL BUTT / LEVELING PLATE

PROTECTED PIN EARS

ONE-PIECE "HORSESHOE" BOSS

For maximum strength

EATON CHAR LYNN 4000 SERIES MOTOR C/W 1-5/8" TAPERED SHAFT

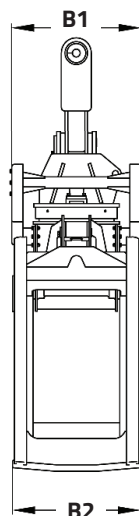
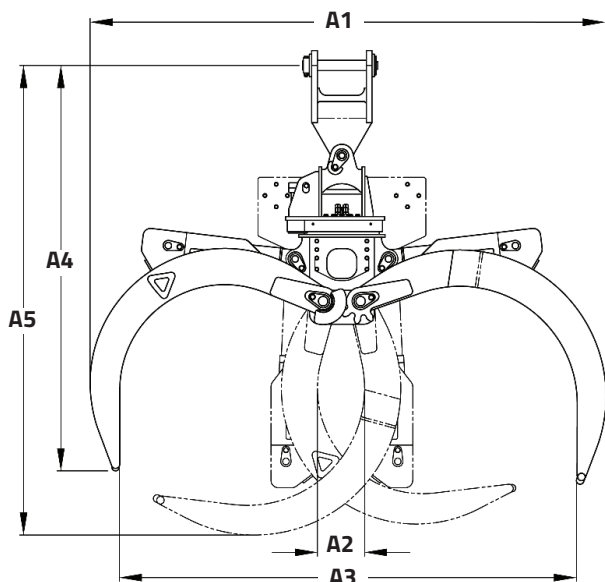
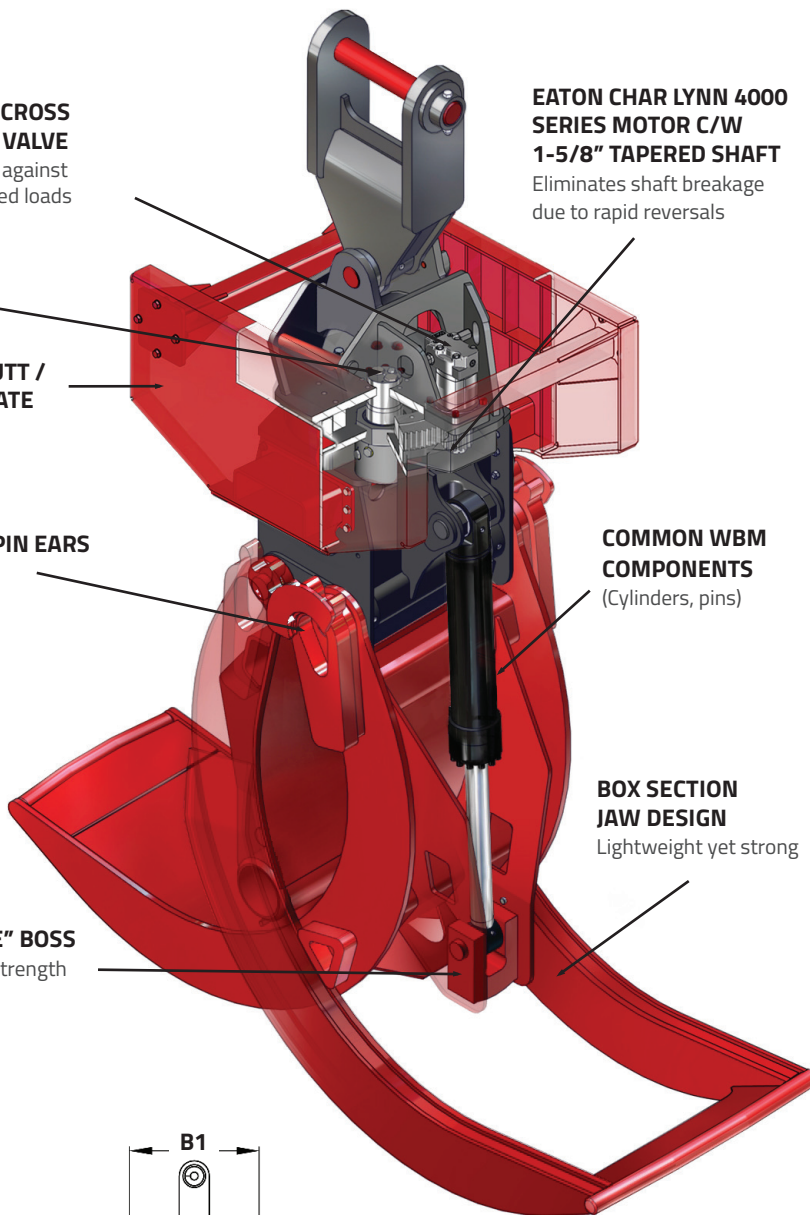
Eliminates shaft breakage due to rapid reversals

COMMON WBM COMPONENTS

(Cylinders, pins)

BOX SECTION JAW DESIGN

Lightweight yet strong



WBM Part #148-564-0007

GRAPPLE CAPACITY	20 Ft ²
A1 - Max. Outside Width - Open	137 33/64"
A2 - Min. Inside Width - Closed	12 9/16"
A3 - Min. Inside Width - Open	121 53/64"
A4 - Drop Height Open	108"
A5 - Drop Height Closed	125 1/16"
B1 - Body Width	34 1/2"
B2 - Jaw Width	34 1/8"
Weight (Includes Butt Plate)	4,897 lbs

Other jaw sizes available.



WELDCO-BEALES MFG.

SPECIALISTS IN ATTACHMENT DESIGN AND MANUFACTURING

www.weldco-beales.com

Western Canada: 1 800 665 0511

Central Canada: 1 800 661 4155

Eastern Canada: 1 877 320 4286

Last revised: February 20, 2019